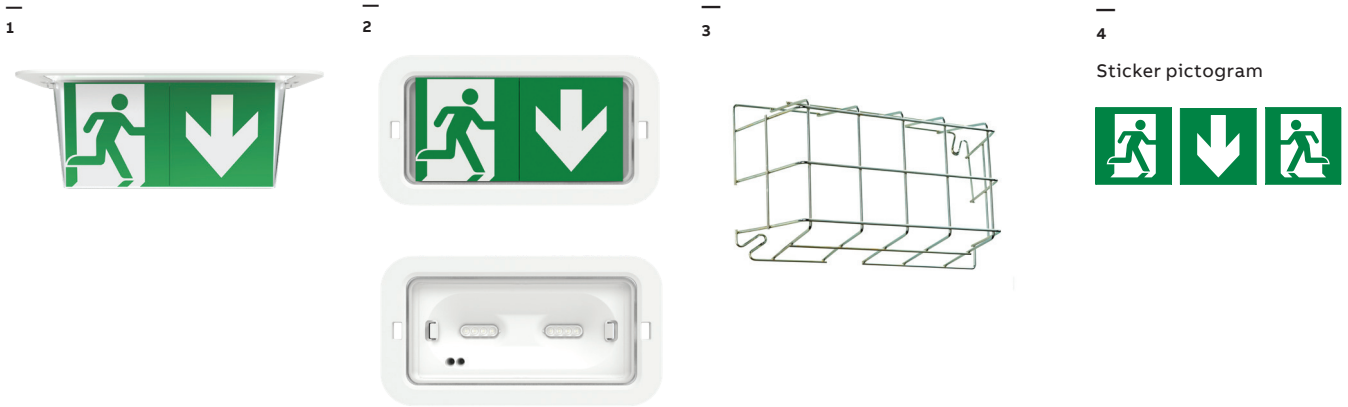


# PrimEvo<sup>+</sup>

## Accessories



### Accessories

	Description	Order code	GID code
1	DS KIT 150	663 432	7TCA307025R0007
2	RK 150	642 302K	7TCA307025R0008
3	Protective grid cover	642 015	7TCA091360R0483
4	PF150/SET for Primevo+ (sticker Arrow and running man)	663 339	7TCA307035R0028
	PS150/SET (Arrow running man neutral) for Primevo+ double sided accessory	663 340	7TCA307035R0029
	Rigid pictogram	660 010	7TCA091350R2175
	Anti-vandal screws for the diffuser (pack of 10)	671 410	7TCA091630R0512
	Anti-vandal screws for the grid (pack of 10)	672 507	7TCA091360R0514

### Spare parts

Description	Order code	GID code
Battery for XTE150 100 lumen (1 unit) - LiFePO4 3.2V 2Ah	758 614	7TCA307055R0006
Batteries for XTE150 380 lumen (pack of 2) - LiFePO4 3.2V 2Ah	758 615	7TCA307055R0007

